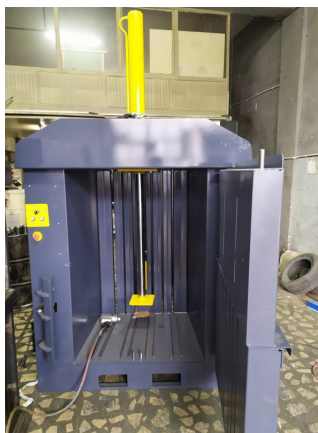




## VERTICAL BALER TONNA20, 20 TONS, 200KN, BALE 150 KG

- A **vertical baler** with **20 tons pressure TONNA20** will **dramatically lower waste cost** and **space savings** in your facilities.
- An automatic bale extraction system
- Can bale **150 kgs** of waste materials
- Bale dimensions: **975 mm x 800 x 1000 mm** (W x D x H)
- **6-8 package/hours**
- Machine size: **1560 mm\*1030 mm\*2600 mm** (W x D x H)
- Ideal for locations where space and height are restricted
- Easy to use and simple to install
- Noise Level: 72 decibels
- Cycle Times: 40 seconds
- **Electronic command control system**
- **Motor: 2,2 kW Single Oil cylinder**



- A **vertical baler** with **20 tons pressure TONNA20** will **dramatically lower waste cost** and **space savings** in your facilities.

- An automatic bale extraction system
- Can bale **150 kgs** of waste materials
- Bale dimensions: **975 mm x 800 x 1000 mm** (W x D x H)
- **6-8 package/hours**
- Machine size: **1560 mm\*1030 mm\*2600 mm** (W x D x H)
- Ideal for locations where space and height are restricted
- Easy to use and simple to install
- Noise Level: 72 decibels
- Cycle Times: 40 seconds
- **Electronic command control system**
- **Motor: 2,2 kW Single Oil cylinder**

## VERTICAL BALER 20 TONS TONNA20



A vertical baler with 20 tons pressure TONNA20 will dramatically lower waste cost and space savings in your facilities. It is widely used in warehouses, stores, hotels, restaurants, manufacturers from various industries, and because of its quality and unique features even by landfills. The pressing power of Vertical baler TONNA20 is 20 tons, therefore, it can be used to squeeze different materials, such as paper, cartons, plastic, plastic bottles, stretch film, and others. The weight of the waste bale can be up to 150 kgs, depending on the material which you are squeezing. Vertical baler TONNA20 has an advanced automatic bale extraction system, which will help you extract the waste bale from the recycling baler with no effort. Thanks to wire technology waste bale can be easily wired together so the output is compact and tied together. Vertical baler TONNA20 is designed for outdoor applications and the machine is recommended for indoor or outdoor use. Vertical baler has a very long lifespan. It can be used for 20 years or more. The dimensions of the recycling baler are 2600 mm (H) x 1560 mm (W) x 1030 mm (D) and the machine weighs 780kg. It has a 1-year warranty and we offer cheap international shipping.



## MAIN FEATURES OF CARDBOARD COMPACTORS TONNA20

- An **automatic bale extraction system**
- Can bale **150 kgs** of waste materials
- Bale dimensions: **975 mm x 800 x 1000 mm** (W x D x H)
- **6-8package/hours**
- Machine size: **1560 mm\*1030 mm\*2600 mm** (W x D x H)
- Ideal for locations where space and height are restricted
- Easy to use and simple to install

- Noise Level: 72 decibels
- Cycle Times: **40 seconds**
- **Electronic command control system**
- **Motor: 2,2 kW Single Oil cylinder**

## SPECIFICATION OF VERTICAL BALER 20 TONS TONNA20

<b>Vertical baler 20 tons TONNA20</b>	
Height	2600 mm
Width	1560 mm
Depth	1030 mm
Weight	780 kg
Transportation Height	1955 mm
Power Supply	220 - 240 V (single-phase)
Motor	2.2 KW, 16 Amp
Pressing Force	Up to 20 Ton
Noise Level	72 decibels
<b>Bale dimensions</b>	
Height	1000 mm
Width	975 mm
Depth	800 mm
Weight	Up to 150 kg - depending on the material used
Cycle Times	40 seconds
<b>Loading aperture size</b>	
Height	470 mm
Width	975 mm
Depth	800 mm

## VERTICAL BALER TONNA20 VIDEO

### ADVANTAGES OF VERTICAL BALER 20 TONS TONNA20

- Bale weight output 150 KG
- A mid-range baler with easy loading for large-size cardboard boxes
- Retaining claws to reduce the spring back of material in the baler chamber
- Fully automatic bale ejector: simplifies removal of the bale

## HOW DOES VERTICAL BALER TONNA20 WORK



## **Field Requirements**

The following criteria should be taken into account when determining the location for Vertical baler TONNA20:

- A certain ground is required for the machine. This floor must be able to support the weight of the machine, as well as carry pallet trucks and load-carrying vehicles.
- The room surrounding the machine should be sufficient for loading, monitoring, maintenance, and removal of balers.
- The electrical power source (220v / 240v) should be close to the machine.
- The lighting system where the machine is located should be made in accordance with the occupational health and safety legislation in that region.
- There should be sufficient ventilation at the place where the machine is located.

## **Filling the machine with waste material**

Once the cardboard compactors have been secured, the machine is now ready to load. Start filling the machine after closing the lower door. When starting a new bale, put a large piece of cardboard (or similar material suitable for bale) in the bottom of the hopper. Thus, all ties/tapes with which you will later tie the bale and all solid wastes will be caught. Make sure that only waste material gets into the machine. Once full, the waste material can be baled again.

## **Baling**



The clamping force of hydraulic hoses is used to compress the waste material. The bonded material is compressed to reduce the volume of the waste material. The baling procedure is as follows:

1. The bale chamber is filled up to the top of the machine.
2. For compression, select the compression format from the control panel, then press the green button and press it down with the "compress" command. The machine will continue the compression cycle and will automatically stop when it is completed. (The clamping plate can stay in the same state until you refill the machine.)
3. To bring the clamping plate to the upper level again, press the green button and then move it to the "pinch" position. In the clamping cycle, the machine will stop automatically and the clamping plate will come back to its original position.
4. The machine will stop as soon as you press the red button.
5. Continue this procedure until the desired amount of bales has been filled and compacted.

## **WASTE BALER TONNA BALING PROCESS VIDEO**

## **WASTE BALER STRAPPING BALE FASTER WITH TEXTILE STRAP - VIDEO**